



LOW COST HYBRID EYESAFE LASER RANGEFINDER RECEIVER

- HIGH SENSITIVITY
- HERMETIC TO-8 PACKAGE
- FAST RECOVERY – LOW MINIMUM RANGE
- InGaAs PIN DETECTOR
- SINGLE +5V SUPPLY AT 25mA
- SECOND GENERATION PROVEN PERFORMANCE



DESCRIPTION:

The **Model 759A-LT** is a low cost hybrid eyesafe laser rangefinder receiver for high volume programs requiring aggressive pricing. Cost savings come from lower cost materials and streamlined conformance test requirements while rigorous process control ensures reliability and performance. Compact construction and PCB mounting capability make the **Model 759A-LT** ideal for miniature applications. Total power consumption of 125mW allows operation from batteries.

SPECIFICATIONS:

Detector	1.54 μ m, InGaAs PIN, 300 μ m +60/-30 μ m \varnothing	Outputs	TTL or HCT CMOS compatible, negative logic. Start/Stop on common line. \geq 18ns pulses. Maximum source/sink current 2mA.
Sensitivity	40nW typical, 60nW maximum at 1.54 μ m, 20ns pulse, 50% detection, 0.1% FAR, 25°C, degrades with narrower pulses and higher temperatures.	Alignment	Analog test point for alignment
T_o Pulse Optical	>5 μ W	Power	+5 \pm 0.25VDC at 25mA typical
Time Programmed Gain (TPG)	1/R ² law operates from minimum range of ~20m to 1km with separate Tx/Rx optics. Minimum range of 30m with 50mW T _o pulse. Open circuit on Pin 11 holds high gain. 0V or GND on Pin 11 holds low gain (-24dB voltage typical).	Temperature	Operating -40° to +85°C Storage -55° to +85°C
Adjustments	Trigger level is adjustable to optimize pulse detection characteristics.	Connections	PCB mount pins For optional test PCB (Add -PCB to part number.)
		Lid Plating	Electroless Nickel
		Size	0.616" \varnothing x 0.415" _{max}
		Weight	0.145 oz (4.1 grams) typical

Specifications subject to change without notice.



APPLICATIONS:

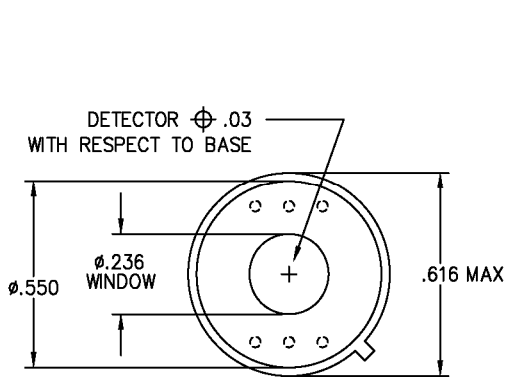
Man-Pack, Weapon-Mount, Vehicle-Mount, TUAV, Airborne Laser Ranging

"In the event this commodity will be transferred to a "foreign person" as defined in 22 CFR 120.16, either outside or within the United States, a validated US State Department license is required."

MODEL NUMBER

CONNECTIONS	759A, PCB mount PINS	759A-LT
-------------	----------------------	---------

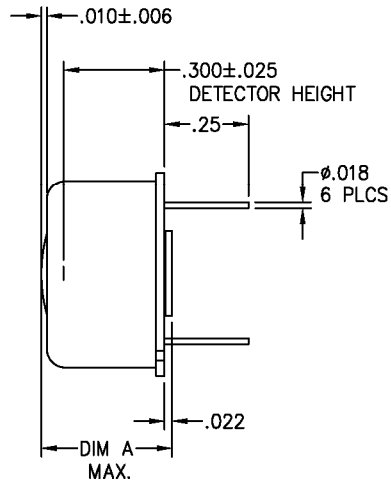
Typical Part Number: **759A-LT =** Connections: PCB mount PINS with optional test PCB



TOLERANCES
.XX=±.02
.XXX=±.005

WINDOW: .042±.006" THK.

RI = 1.471 @ 1550nm; 1.477 @ 1060nm.



MODEL	DIM A
759A-LT	.465

