

### 7551A INTERFACE TEST BOARD

- Provides USB to serial communication between PC and 7551A module
- Includes GUI software package for Windows PC to allow user interface, testing, and experimentation with a 7551A module
- +5V power from standard USB connection for easy interfacing to PC
- Provides convenient measurement points for monitoring 7551A input currents.
- Provides access to additional 7551A digital IOs.



### DESCRIPTION:

The 7551A INTERFACE is a test fixture designed to assist with the evaluation and development of products that incorporate an AMI Laser Rangefinder Receiver with Range Processor Model 7551A and custom variants. The included Graphical User Interface (GUI) program allows for easy interfacing with a PC to quickly test and learn the full capabilities of the 7551A module. All required mating cables are included with the device.

### SPECIFICATIONS:

The 7551A INTERFACE test fixture only requires +5V & GND connections which are provided via the included USB connector.

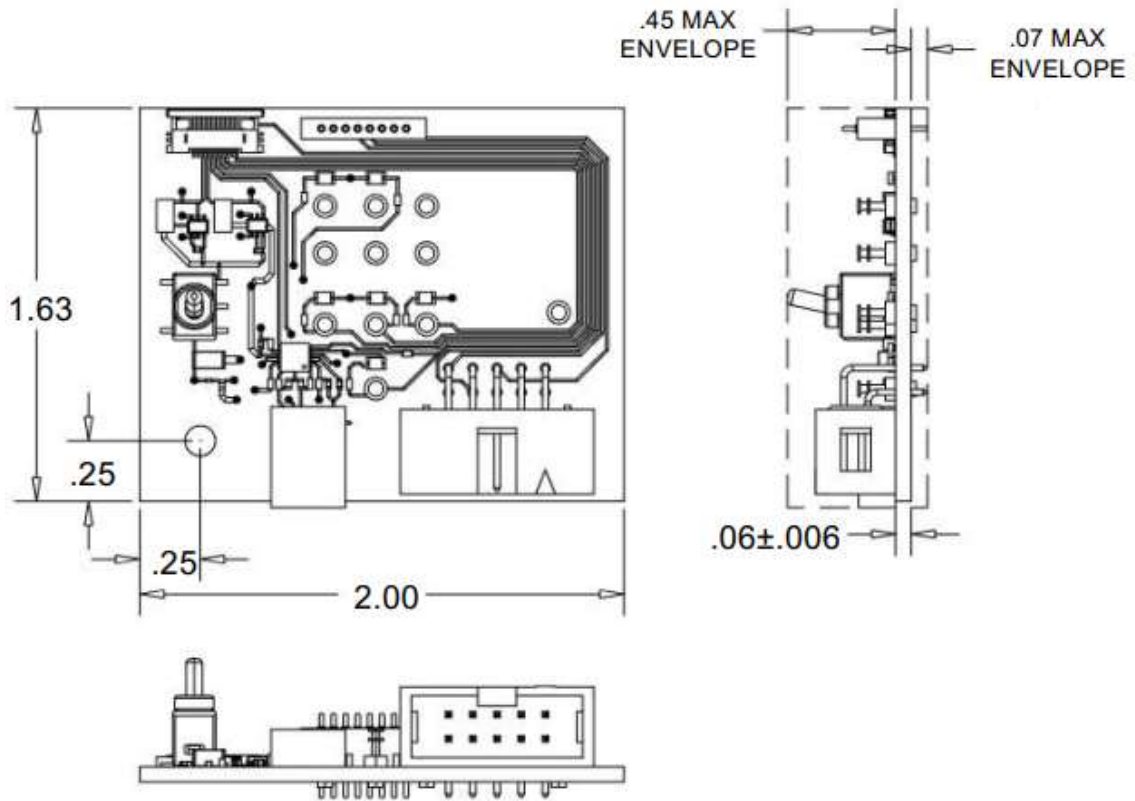
All of the necessary voltages for the 7551A Rangefinder Receiver module are supplied by the 7551A INTERFACE board so no external power supplies are required.

**Size:** 2.00" x 1.63" x 0.58"

*Specifications subject to change without notice.*



**Model 7551A INTERFACE Mechanical Outline Drawing**



DWG 23-024