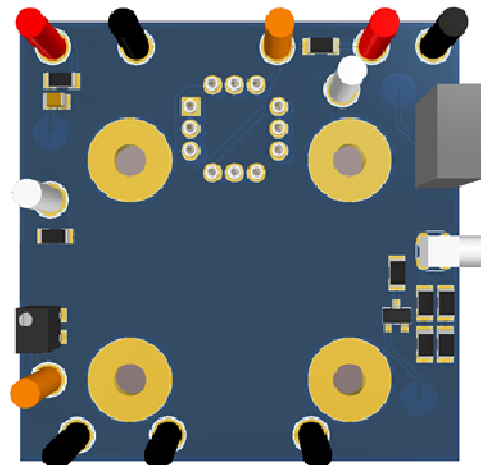


755A EVALUATION TEST BOARD

- **SOCKET-MOUNT FOR EASY INSTALLATION OF 755A/755A.1 SERIES RECEIVERS.**
- **OPERATES FROM 5.0 V POWER AND 100 V FOR APD BIAS.**
- **CONVENIENT TEST POINTS FOR MONITORING OUTPUT SIGNALS.**



DESCRIPTION:

The **755A-PCB** Evaluation Test Board is designed to assist in the evaluation and development of products that incorporate an AMI 755A/755A.1 Series Ranging Receiver and custom variants. The 755A receivers can easily be inserted into the socket pins without the need for soldering. All output signals can be monitored via the test point pins and an external voltage signal can be applied to switch the TPG between low and high gain. See 755A-PCB Application Note for detailed operating information.

SPECIFICATIONS:

PARAMETER	Min.	Typical	Max.	Units
Supply Voltage	4.95	-	12.6	V
Supply Current (in low gain)	-	-	25	mA
APD Bias Voltage	-	100	-	V
APD Bias Current	-	-	160	μA
Size	2.1 x 2.0 x 0.625			inches

Specifications subject to change without notice.



APPLICATIONS:

Laser Rangefinder Systems, Target Detection Systems

"In the event this commodity will be transferred to a "foreign person" as defined in 22 CFR 120.16, either outside or within the United States, a validated US State Department license is required."