



ANALOG MODULES, INC.

Specialists in Analog and Laser Electronics

MODEL 773

INTERFACE DESCRIPTION

PIN	SIGNAL NAME	DESCRIPTION
1	+5-12V INPUT	5-12 VDC required to power module. Built-in inrush current limit and 22 μ H EMI choke (reference Figure 1).
2	+5-12V RETURN	Main 5-12 VDC power return (reference Figure 1)
3	PS INHIBIT	High Input (3.3 V CMOS) inhibits power supplies and driver functions (reference Figure 2).
4	CHARGE ENABLE	High Input (3.3 V CMOS) charges input capacitor (reference Figure 1).
5	DRIVE SIGNAL	High Input (3.3 V CMOS) switches output current to diode load. Output current pulse width equals Drive Signal Input pulse width (reference Figure 3).
6	SIGNAL RETURN	(Reference Figure 1).
7	RESERVED	
8	READY SIGNAL	High Output (3.3 V CMOS) indicates capacitor is charged and diode driver is ready to fire (reference Figure 4).

126 BAYWOOD AVENUE ♦ LONGWOOD, FL 32750-3426 ♦ USA
(407) 339-4355 ♦ FAX (407) 834-3806 ♦ E-mail: ami@analogmodules.com
www.analogmodules.com

FIG 1 POWER INPUT & ENABLE

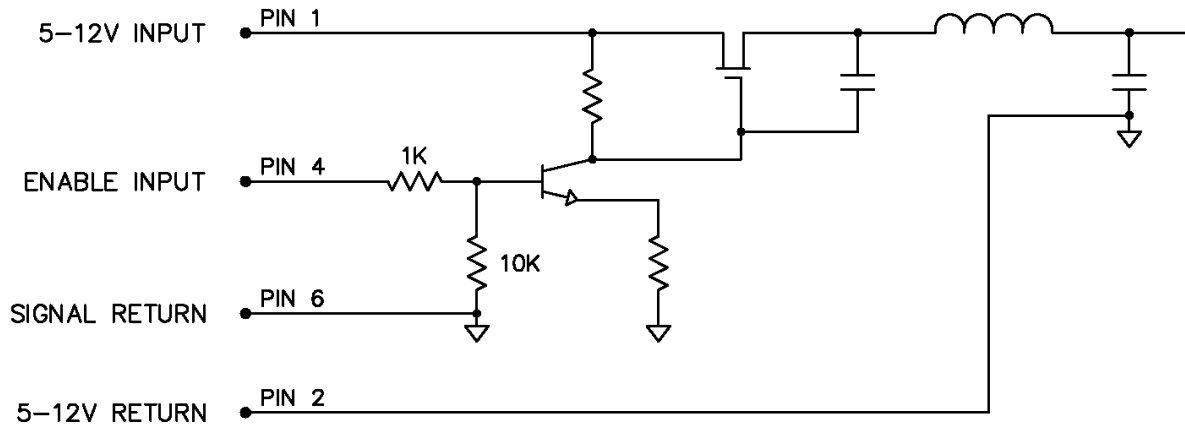


FIG 2 PS INHIBIT

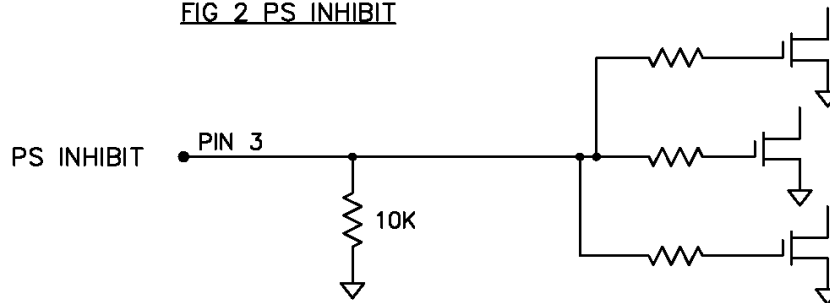


FIG 3 DRIVE SIGNAL

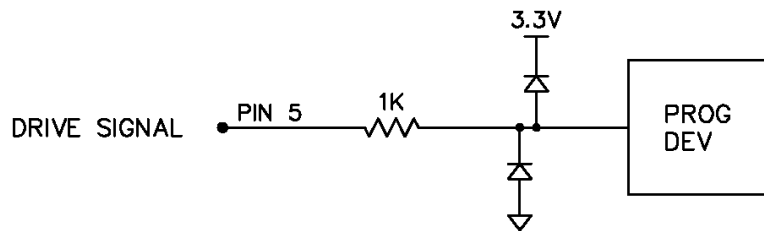
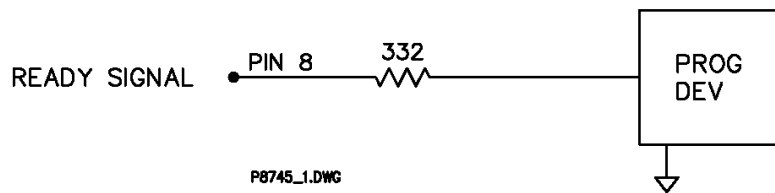


FIG 4 READY SIGNAL



P8745_1.DWG